



MGPL

CARBIDE LIMIT and AIR GAUGES

CARBIDE PLUG GAUGE

- Carbide Plug Gauges are normally supplied with GO in Carbide & NOGO in stabilised steel.
- Both can be supplied in carbide as per requirement.
- MGPL gauges have excellent wall thickness to give desired results.

Range

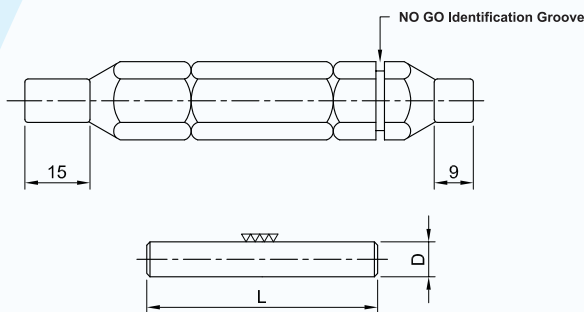
0.5 to 8 mm	Reversible type design
8 to 40 mm	Taper shank design
40 to 60 mm	Trilock design
60 to 400 mm	Plate type Plug Gauge

- Extra length up to 100 mm can be supplied as per requirement.

NOTE : GO & NOGO Size Manufactured As Per IS 3455 (1971) Unless Specified.



Reversible Type Design 0.5 to 8 mm



- Gauging Members is SOLID TUNGSTEN CARBIDE.
- Handle is made of Aluminium (with Brass/Aluminium Collets to hold the Gauging Member).

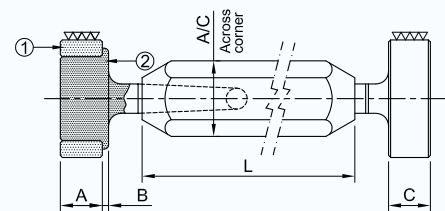
GO MEMBER 'L' = 25 mm

NO GO MEMBER 'L' = 20 mm

HANDLE DETAILS

Range D	Handle L	A/C of Hex.
0.5 to 1.9 (1W)	67	7.5
1.9 to 4.7 (2W)	79	10.5
4.7 to 7.1 (3W)	88.5	16
7.1 to 8.0 (4W)	99	21.5

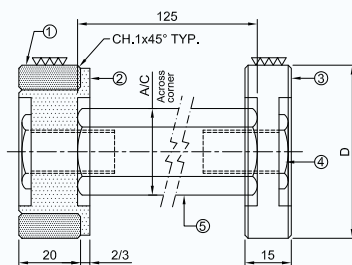
Taper Shank Design 8 to 40 mm.



- Tungsten Carbide Ring of Special. Wear resisting Grade.
- EN-31 Support Shank to Carbide Ring.
- NO GO Member of EN-31 (Hardness : 60±2 HRC) Silver as Brazing Media.

Range D	A	B	C	L	A/C of Hex.
8-10	10	2	07	56	Ø10
10-14	10	2	07	63	Ø12.5
14-18	15	2	10	70	Ø16
18-24	15	2	12	80	Ø19
24-30	15	2	14	80	Ø19
30-40	15	5	15	80	Ø25

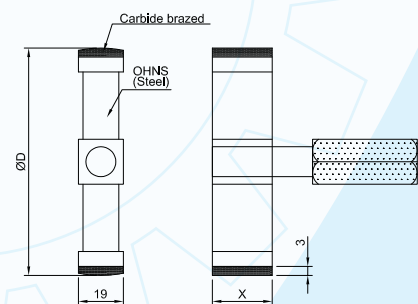
Trilock design 40 to 80 mm



40 to 60mm Double Ended Trilock Design

- Tungsten Carbide Ring of Special Wear resisting Grade.
- EN-31 Support Shank to Carbide Ring.
- NO GO Member of EN-31 (Hardness : 60±2 HRC).
- Standard Bolt of M10 for fitment.
- Aluminium Handle dully marked with GO, NO GO Sizes and as per customer Specification.
- 60 to 80mm Single Ended Trilock.

Plate type Plug Gauge 60 to 400 mm



Carbide Plate Type Plug Gauge
GO & NO GO in Carbide

X - NOGO - 20
GO - 25

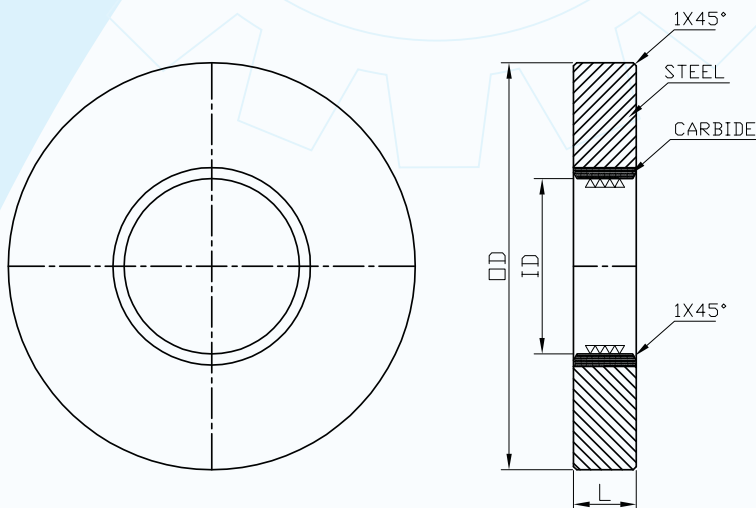
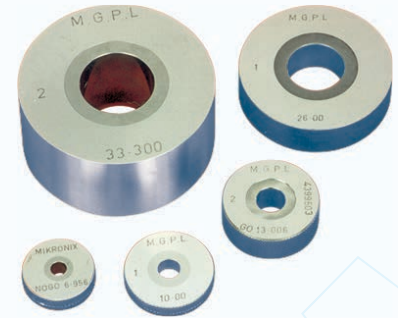
Following designs can be supplied as per requirement.

- Extra Length Plug Gauge.
- Air Groove on Plug Gauge.
- Paddle Type Plug Gauge.

CARBIDE RING GAUGE

- MGPL Carbide Ring Gauges are normally supplied GO in Carbide & NOGO in steel.
- GO & NOGO both can be supplied if required in Carbide.
- Setting Rings are manufactured in Carbide.
- Extra length Ring Gauges can be supplied.
- Manufacturing Range : 4 to 83 mm.

NOTE: GO & NOGO Size Manufactured As Per IS 3455 (1971) Unless Specified.

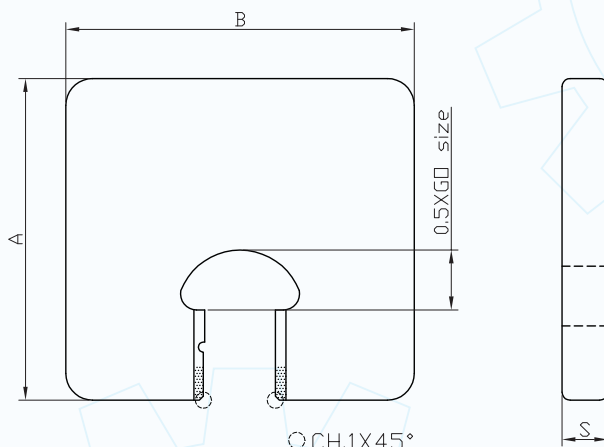
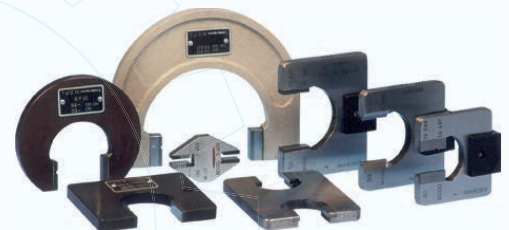


SR. NO.	RANGE (ID)	STEEL OD KNURLED	L
1	4-8	30	10
2	8-10	38	15
3	10-20	45	15
4	20-27.5	53	15
5	27.5-35	63	20
6	35-40	71	20
7	40-50	85	20
8	50-67	100	20
9	67-71	105	20
10	71-75	110	20
11	75-80	115	20

CARBIDE SNAP GAUGE

- Gauges as per customer design can be supplied.
- Supplied normally in single ended design.
- Manufacturing Range : 3 to 300 mm.

NOTE: GO & NOGO Size Manufactured As Per IS 3455 (1971) Unless Specified.



Material

- Gauge Frame : Toughened steel body marked with GO & NO-GO sizes.
- Gauging Jaw Tips : Tungsten Carbide.

SR. NO.	RANGE	A	B	GO LENGTH	NO-GO LENGTH	S
1	4-16	49	56	10	07	4.5
2	16-25	60	65	12	07	8.5
3	25-32	70	80	12	07	8.5
4	32-40	72	90	12	07	8.5
5	40-50	88	100	12	07	8.5
6	50-63	100	118	12	07	8.5
7	64-72	121	105	12	07	9.4
8	72-78	130	110	12	07	9.4
9	78-80	136	114	12	07	9.4

Above 80 mm Cast Iron Body.

Following designs can be supplied as per requirement.

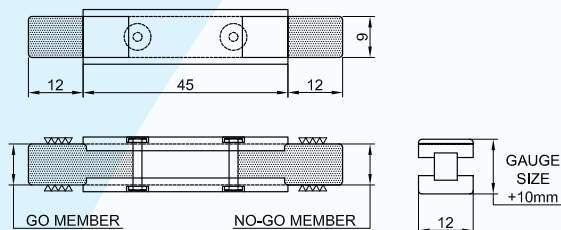
- Blade Type Snap Gauge.
- Groove Type Gauge.
- Template Type Snap Gauge.
- Double Ended.

CARBIDE WIDTH GAUGE

- MGPL has designed Carbide Width Gauges in reversible type design to suit a) Piston Industries, b) Pumps & Motors Industries. c) Automobile & Crankshaft manufacturers.
- Special gauges like Woodruff Width Gauges & Crankpin Width Gauges in Carbide are most suitable to crankshaft manufacturers.
- Setting Masters in ± 1 micron can be supplied.

NOTE: GO & NOGO Size Manufactured As Per IS 3455 (1971) Unless Specified

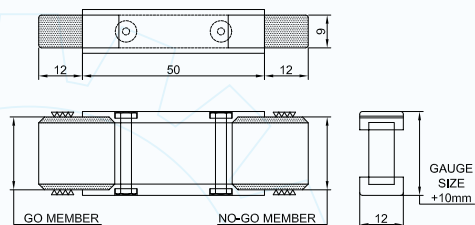
Range : 0.5 mm to 10 mm



Material :

- Aluminium Handle : Duly marked with GO & NO GO sizes & NO GO identification groove.
- Go Member : Solid Tungesten Carbide.
- No-Go Member : Solid Tungesten Carbide.

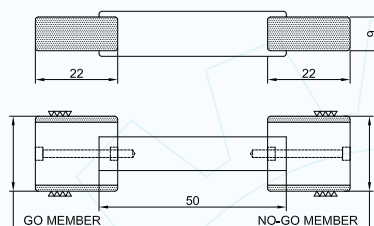
Range : 10 mm to 20 mm



Material :

- Steel Handle : Duly marked with GO & NO GO sizes & NO GO identification groove.
- OHNS Supports (Hardened).
- Tungesten Carbide Flats : 22mm X 9mm X 2.5mm.

Range : Above 20mm



Material :

- Handle : Duly marked with GO & NO GO sizes & NO GO identification groove.
- OHNS Supports (Hardened).
- Tungesten Carbide Flats : 22mm X 9mm X 2.5mm.

MEASURING PINS

- MGPL supplies Carbide Measuring Pins in Two grades.
- Grade I : Manufacturing Tol = ± 0.001 mm.
- Grade II : Manufacturing Tol = ± 0.002 mm.
- Normally having L=25mm, 50mm.
- Pins with close tolerance of $\pm 0.5\mu$ m can also be supplied.
- Range 0.5mm to 20mm.



CARBIDE AIR PLUG GAUGE

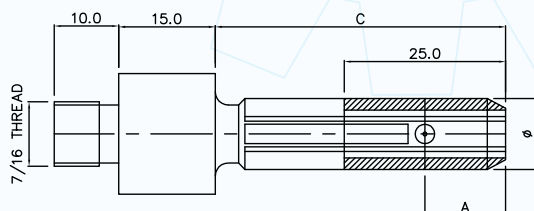
- Can be supplied for Through Bore/ Blind Bore applications.
- Adjustable depth collars can be provided for checking at specific depth.

Range : 5mm to 100mm Chrome Plated Steel

Range : 10mm to 50mm in carbide

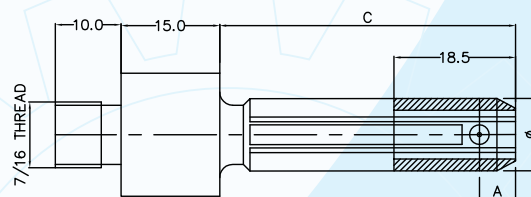
- Please specify the unit for which Air Plug Gauge is required.

THROUGH BORE



Ø	A THROUGH	C
09 - 50	12.5	45

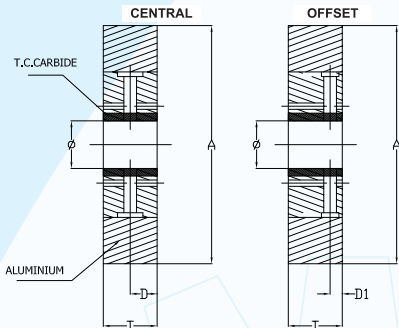
BLIND BORE



Ø	A BLIND	C
09 - 50	4.5	45

CARBIDE AIR RING GAUGE

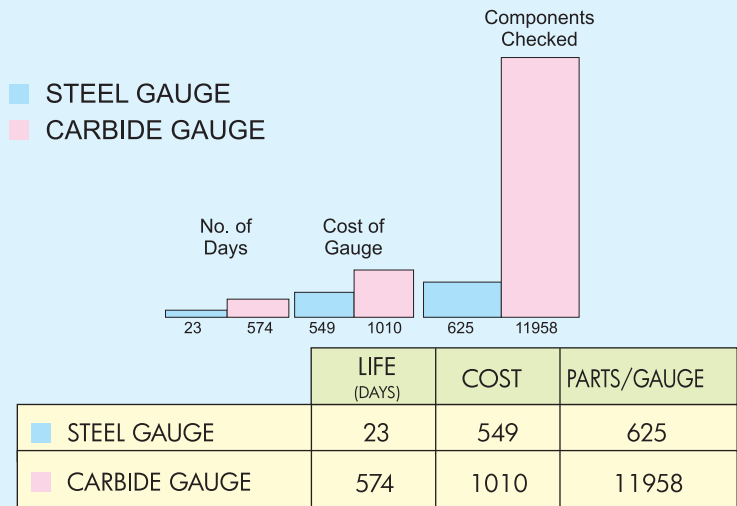
- Offered with Jet at Center or at Corner for stepped shaft.
Range : 5mm to 100mm Chrome Plated Steel.
Range : 10mm to 50mm in carbide.
- Please specify the unit for which Air Ring Gauge is required.



AIR SNAP GAUGE

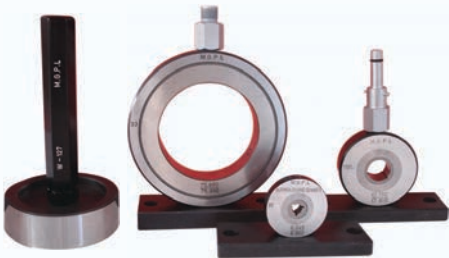
- Offered with Jet at Center or at Corner.
Range : 10mm to 100mm with V resting in Carbide.
- Carbide Air Snap Gauge with Jet fixed in Carbide Tip.
- Please specify the unit for which Air Snap Gauge is required.

STEEL VS CARBIDE GAUGE



Stunning Observation

Gauge cost per component with steel gauge was 0.87 Ps.
Gauge cost per component with MGPL Carbide Gauge was 0.08 Ps.



TYPE - CENTRAL / OFFSET

Ø	A	T	D	D1
10-20	63±1	20	10	4
20-30	63±1	20	10	4
30-40	84±1	20	10	4

UNIT-1



UNIT-2



UNIT-3



MGPL OTHER PRODUCTS

Air Gauge Unit, Air Electronics Units, OBD Unit, Dial Snap Gauges, Multigauge & Computer Aided Multigauging & Fixtures.



MIKRONIX GAUGES PVT. LTD.

B-25/29, MIDC Industrial Area,
Chikalthana, Aurangabad - 431 210. (M.S.) INDIA.
Tel. : 0091 - 240 - 2483059, 2482210, 2480629
Fax : 0091 - 240 - 2481323, 2483061.
Email : sales1@mikronix-gauges.com
sales2@mikronix-gauges.com
enquiry@mgpl.in
Web : www.mikronix-gauges.com

Head Office : 09850822642, 09850822643
Branch Office :
Pune : 07720068348, 7720068360
Delhi : 09911203101
Bangalore : 09738715547, 09738521810
Chennai / Coimbatore: 09841250260, 08144682255

